

Celotex CW4000

Introduction

Celotex CW4000 is an insulation board aimed specifically at partial fill cavity wall applications.

With low emissivity foil facings, CW4000 is manufactured from rigid polyisocyanurate (PIR) using a blowing agent that has zero ozone depletion potential (zero ODP) and low global warming potential (GWP).

With Celotex CW4000 you are specifying an insulation board that:

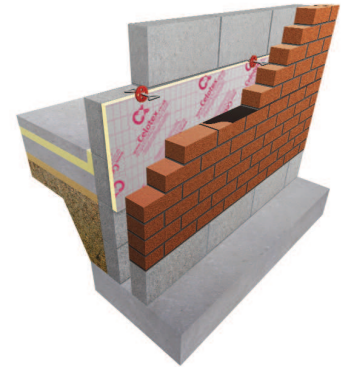
- Comes in conveniently sized boards for installation between cavity wall ties
- Achieves an A+ rating when compared to the BRE Green Guide 2008
- Is certified under BBA certificate number 94/3080
- Includes low emissivity foil facings giving improved thermal insulation performance within cavity air spaces
- Is Energy Saving Trust Recommended
- Future proofs the energy performance of new and existing buildings

Applications

Celotex CW4000 is specifically for use in partial-fill cavity wall applications.

Specification Clause

The insulation shall be Celotex CW4000 _____ mm thick comprising a polyisocyanurate rigid foam insulation core with a thermal conductivity of 0.022 W/mK with low emissivity aluminium foil facings on both sides. Celotex CW4000 is CFC/HCFC free with zero ODP and low GWP and CE marking compliance to BS EN 13165. Celotex CW4000 is manufactured in accordance with quality management system ISO 9001 and environmental management system ISO 14001. Celotex CW4000 achieves an 'A+' rating when compared to the BRE Green Guide 2008. All products must be installed in accordance with instructions issued by Celotex.



Celotex CW4000 in a masonry cavity wall application

Sustainable Insulation

Celotex PIR insulation has been independently assessed by BRE Global and has been accredited with an A+ rating when compared to the BRE Green Guide 2008.

The results also show that Celotex offers a lower environmental impact than other typical PIR manufacturers.

For further information about Celotex' sustainable insulation solutions, visit the sustainability pages of the website at celotex.co.uk



Celotex CW4000 Technical Data

Product Code	Thickness (mm)	R-value (m ² K/W)	Weight (kg/m ²)
CW4025	25	1.10	0.85
CW4040	40	1.80	1.26
CW4050	50	2.25	1.55
CW4055	55	2.50	1.74
CW4060	60	2.70	1.90
CW4065	65	2.95	2.05
CW4070	70	3.15	2.19
CW4075	75	3.40	2.34
CW4080	80	3.60	2.48
CW4085	85	3.85	2.62
CW4090	90	4.05	2.76
CW4100	100	4.50	3.27

Physical Properties

	Method	CW4000
Compressive strength	BS EN 826	≥120kPa
Dimensional stability	BS EN 1604	DS(TH)8
Water vapour resistance	BS EN 12086: Method B	>150 MNs/g
Thermal conductivity	BS EN 12667	0.022 W/mK
Surface spread of flame	BS 476-7	Class 1 (25mm - 90mm only)

Typical U-values

U-values will vary depending on application. To calculate a specific U-value, please refer to our online U-value calculator at celotex.co.uk

Installation Guidelines

For full details of the installation of Celotex CW4000, please refer to the 'application' pages of the website at celotex.co.uk.

Further information

If you wish to contact Celotex, please visit celotex.co.uk and click on the 'contact us' page.

For information regarding storage, installation and handling of Celotex products, or for Health & Safety advice, please refer to the 'literature' pages of the website at celotex.co.uk

Celotex has a policy of continuous product development and reserves the right to alter product designs or specifications without prior notice.

*Calls to the Celotex Technical Centre are charged at 30p per minute from a BT landline and lines are open Monday - Friday from 8.00am - 5.15pm. Details are correct at date of publication - January 2012.

Celotex Limited
Lady Lane Industrial Estate,
Hadleigh, Ipswich
Suffolk IP7 6BA

T: 0901 996 0100*
W: celotex.co.uk

Registered Office:
Lady Lane Industrial Estate
Hadleigh, Ipswich, Suffolk IP7 6BA
Registered in England No 2183896