

Altech

Model: ALTHC030 (Wired thermostat)
ALTHC029 (RF Thermostat and Receiver)



06/2017-V019

Quick Guide Installation

Technical Support

T: 01226 323961

ALTHC030 & ALTHC029 Quick Guide

Introduction

The ALTHC030 thermostat will switch your heating system on or off, as needed, in accordance with the temperature set by you. The ALTHC030 series includes the following products:

- ALTHC030 for wired applications
- ALTHC029 (Thermostat + Receiver) for wireless applications
- Thermostat for wireless application, using 5 x 5 receiver
- Receiver for wireless application using 5 x 5 transmitter

Go to www.salus-manuals.com for the full PDF version of the manual.

Product Compliance

EU Directives: 2014/30/EU, 2014/35/EU, 2011/65/EU and Radio Equipment Directive (RED) 2014/53/EU. Please check www.saluslegal.com for the full information. Radio Frequency Range 868.0 MHz - 868.6MHz, Max Transmitting Power: <13 dBm

For details of the Warranty on your Product, please visit <http://www.salus-tech.com/warranty/>

Safety Information

Use in accordance with the EU and national regulations.

For indoor use only.

Keep your device completely dry.

This product must be installed by a competent person and in accordance with all the EU and national regulations.



Always isolate the AC Mains supply before installing or working on any components that require 230 VAC 50Hz supply.

Installation

ALTHC030 Thermostat



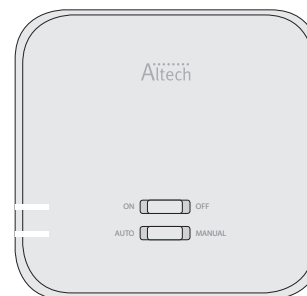
Insert the batteries and wire up the device.

Terminal	Description	Backplate
1 (COM)	Common Terminal	
2 (NC)	Switched Live OFF	
3 (NO)	Switched Live ON	

ALTHC029 (Thermostat and Receiver)

i Please wire up the receiver and switch the power on, once the receiver is switched on then insert the batteries into the thermostat. Now follow Test pairing process to confirm connection between both the thermostat and receiver.

For the ALTHC029 pack, the thermostat and the receiver are already paired.



Terminal	Description	Receiver Terminals
NO	Switch Terminal	
COM	Common Switch Terminal	
L	Mains Live (230VAC)	
N	Mains Neutral	

Remove link from boiler.

DIP Switch Settings

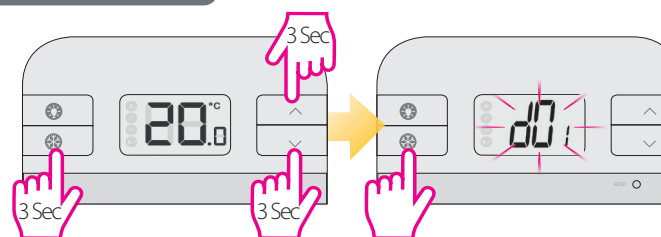
The DIP switches are found on the rear of your thermostat and can be used to change the span (temperature accuracy) of your thermostat from the default +/-0.5°C to +/-0.25°C. This may cause your boiler to operate more frequently. The DIP switches are located on the back of the thermostat. ON +/-0.25°C, OFF +/-0.5°C.



Button functions for ALTHC030 and Thermostat

Key	Function	
	Turn on the LCD backlight	
	Turn On/Off the Frost Mode	
	Increase button	
	Decrease button	
	ALTH029 Thermostat	1. Press once to enter/exit in RF Test Mode
	ALTHC030	2. Press for 3 seconds to enter/exit Pairing Mode
	Press once to return to Factory Settings	
	Press for 3 sec all the buttons to enter Installer Mode	

Installer Mode



Press the three buttons together for 3 seconds.

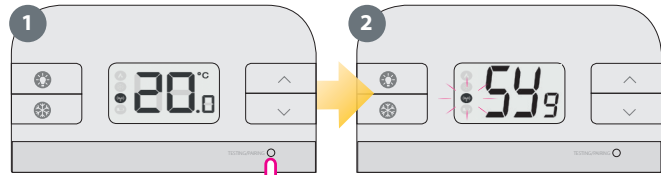
dxx	Function	Parameter	Description	Default value
d01	Temperature display increments	0.1°C or 0.5°C	Select the temperature display increments	0.5°C
d02	Temperature offset	+/-3.0°C	Calibrate your thermostat temperature	0.0°C
d03	Frost setpoint	5.0°C-17.0°C	Set the Frost Point temperature	5.0°C

Pairing the thermostat with the receiver

If you are using the ALTHC029 pack, the pairing between the thermostat and the receiver is already done. 

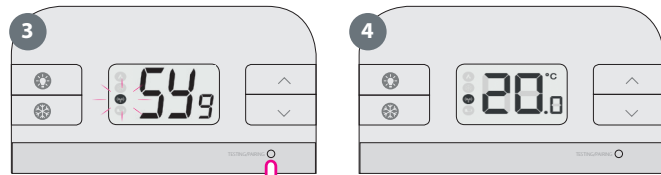
If you bought the thermostat and receiver separately then pair as follows. Please make sure that the receiver is set on Auto.

Begin the pairing process

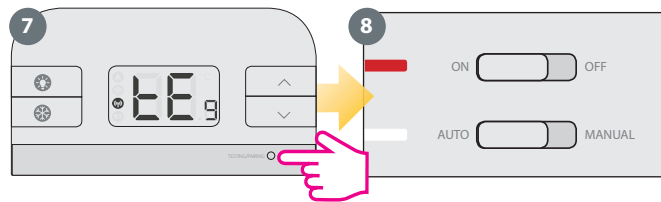
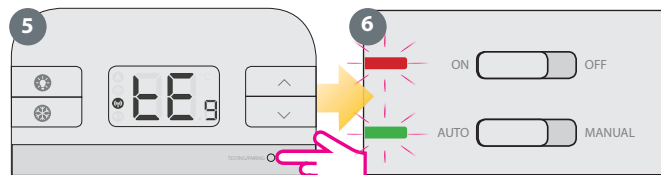


Wait 9 minutes for the timeout process to be complete.

End the pairing process



Test the pairing process



If you bought a receiver or thermostat and intend pairing with other devices in the 5x5 range, please refer to the Receiver Units manual, or the relevant manuals available at www.salus-controls.com

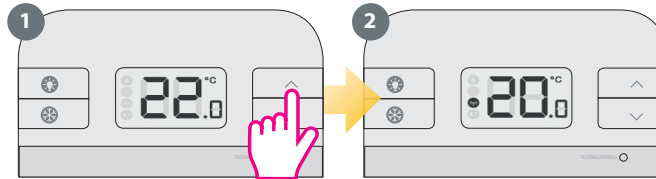
AUTO - System receiver output will switch on and off in relation to the command from the ALTHC029 transmitter.

Manual - System receiver output is controlled by the top slide switch.

ON - When in Manual Mode, ON will turn on the boiler.

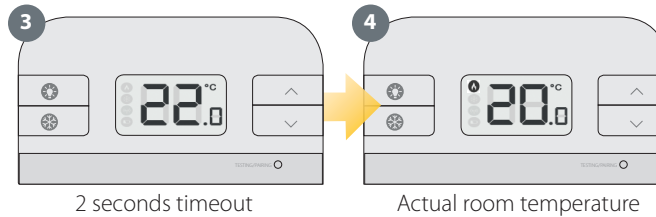
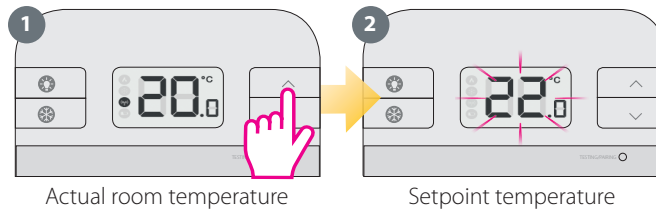
OFF - When in Manual Mode, OFF will turn off the boiler

Review the Setpoint (desired) temperature

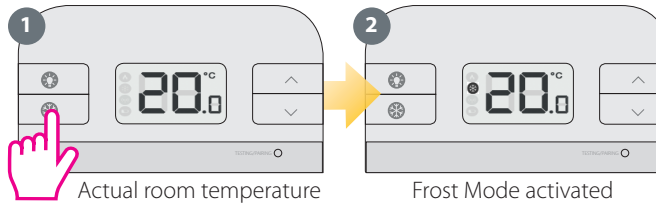


Change the Setpoint (desired) temperature

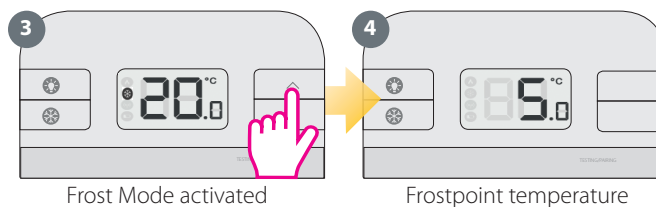
Note: By changing the Setpoint (desired) temperature, you are permanently altering your temperature.



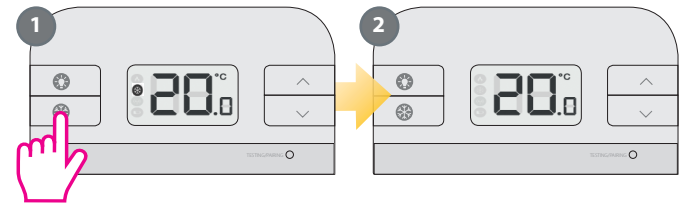
Frost Protection - ON



Note: The Frostpoint temperature can be reviewed by pressing the Up button once, but can only be changed in Installer Mode.

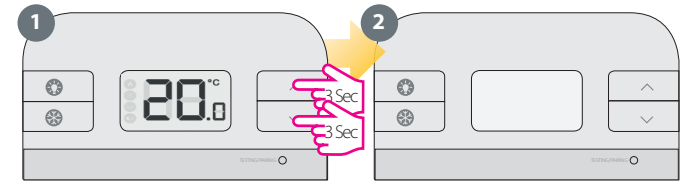


Frost Protection - OFF

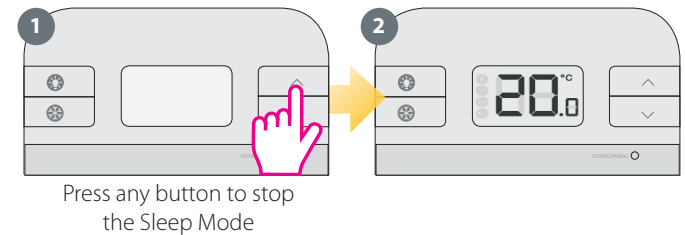


Sleep Mode - ON

Note: When Sleep Mode is active all the thermostat functions will be paused.



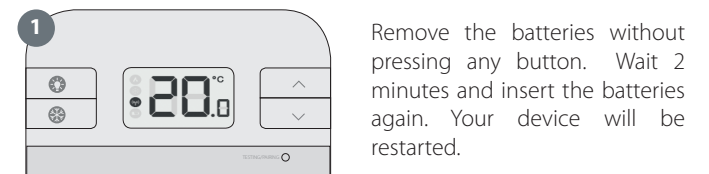
Sleep Mode - OFF



Factory Reset ALTHC030



Factory Reset ALTHC029 Thermostat



When you want to change the batteries your device will use the internal memory to backup your settings. You have 30 seconds to change the batteries before losing your settings.