

Altech

Model: ALTHC027 / ALTHC028 / Thermostat / Receiver



Quick Guide Installation

ALTHC027 and ALTHC028 Quick Guide

Introduction

The ALTHC027 thermostat will switch your heating system on or off, as needed, in accordance with the temperature set by you. The ALTHC027 series includes the following products:

- ALTHC027 for wired applications
- ALTHC028 (Thermostat + Receiver) for wireless applications
- Thermostat for wireless application, using 5 x 5 receiver
- Receiver for wireless application using 5 x 5 transmitter

Go to www.salus-manuals.com for the full PDF version of the manual.

Product Compliance

EU Directives: 2014/30/EU, 2014/35/EU, 2011/65/EU and Radio Equipment Directive (RED) 2014/53/EU. Please check www.saluslegal.com for the full information. Radio Frequency Range 868.0 MHz - 868.6MHz, Max Transmitting Power: <13 dBm

For details of the Warranty on your Product, please visit <http://www.salus-tech.com/warranty/>

Safety Information

Use in accordance with the EU and national regulations.

For indoor use only.

Keep your device completely dry.

This product must be installed by a competent person and in accordance with all the EU and national regulations.



Always isolate the AC Mains supply before installing or working on any components that require 230 VAC 50Hz supply.

Installation

ALTHC027 Thermostat

Insert the batteries and wire up the device.

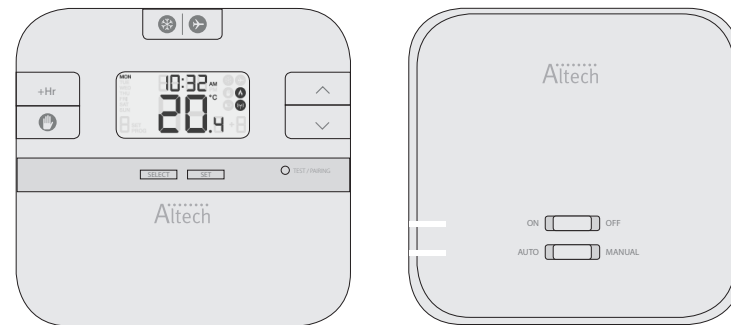


Terminal	Description	Backplate
1 (COM)	Common Terminal	
2 (NC)	Switched Live OFF	
3 (NO)	Switched Live ON	

Installation

ALTHC028 (Thermostat and Receiver)

Please wire up the receiver and switch the power on, once the receiver is switched on then insert the batteries into the thermostat. Now follow Test pairing process to confirm connection between both the thermostat and receiver.

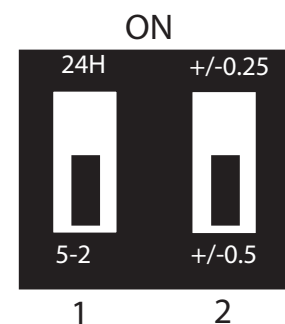


Terminal	Description	Receiver Terminals
NO	Switch Terminal	
COM	Common Switch Terminal	
L	Mains Live (230VAC)	
N	Mains Neutral	

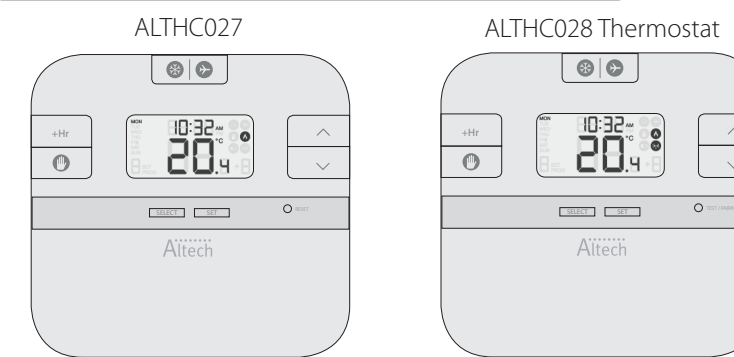
Remove link from boiler.

Dip Switch Settings

The DIP switches are found on the rear of your thermostat and can be used to change the span (temperature accuracy) of your thermostat from the default +/-0.5°C to +/-0.25°C and the programmes 5-2 or 24h. Changing DIP Switch 2 may cause your boiler to operate more frequently. The DIP switches are located on the back of the thermostat.

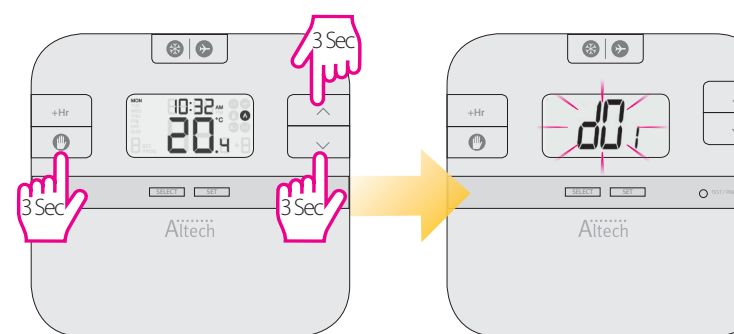


Button Functions ALTHC027 and ALTHC028 Thermostat



Key	Function
	1. Press once to activate Frost Mode 2. Press for 3 seconds in order to activate Holiday Mode.
+Hr	Press once to activate/deactivate Boost function
	Press once to enter/exit Permanent Override function.
^	Increase button
v	Decrease button
SELECT	Select the clock or programme settings
SET	Press to confirm your settings
○	1. Press once to enter in Test Mode for ALTHC028 2. Press for 3 seconds to enter/exit Pairing Mode for ALTHC028 3. Press once to return to Factory Settings for the ALTHC027
+ ^ + v	Press the buttons for 3 seconds to enter Installer Mode
SELECT + SET	Press the buttons for 3 seconds to enter Clock Settings

Installer Mode



Press the three buttons together for 3 seconds.

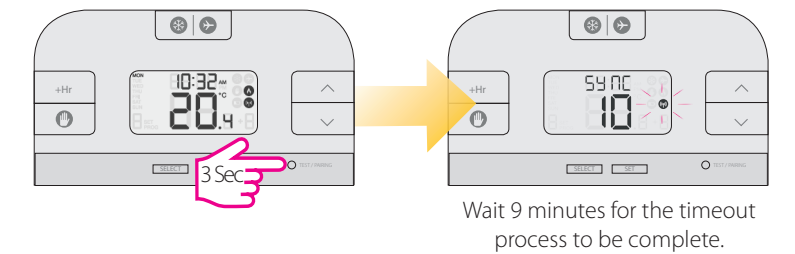
dxx	Function	Parameter	Description	Default value
d01	Temperature display increments	0.1 or 0.5°C	Select temperature display increments	0.5°C
d02	Temperature offset	+/-3.0°C	Calibrate your thermostat temperature	0.0°C
d03	Frost setpoint	5.0-17.0°C	Set the Frost Point temperature	5.0°C

Pairing the Thermostat with the Receiver/Boiler Controller

If you are using the ALTHC028 the pairing between the thermostat and the receiver/boiler controller is already done.

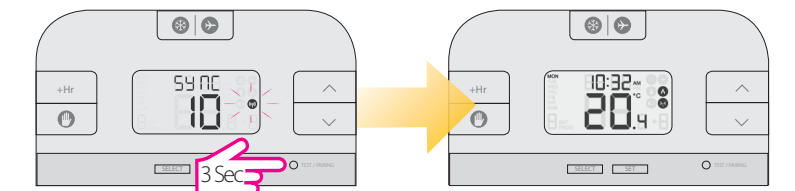
If you bought a Thermostat and Receiver separately then pair as follows. Please make sure that the Receiver/Boiler Controller is set on Auto.

Begin the pairing process

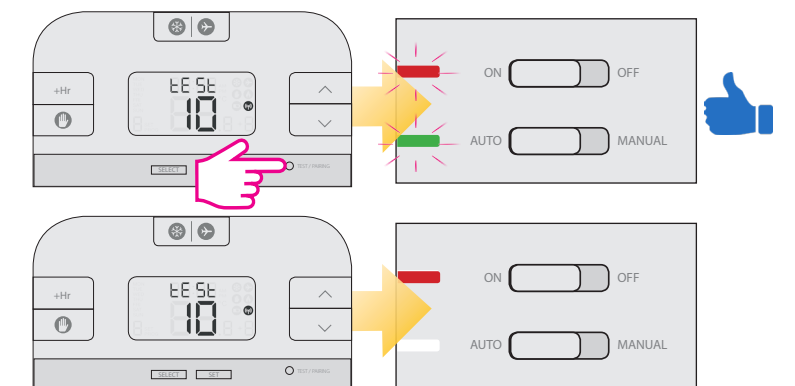


Wait 9 minutes for the timeout process to be complete.

End the pairing process



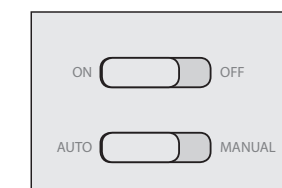
Test the pairing process



If you bought a Receiver or Thermostat and intend pairing with other devices in the 5x5 range, please refer to the Receiver Units manual, or the relevant manuals available at www.salus-manuals.com

Button Description for Receiver

Button	Function
ON	The receiver is enabled, ready for use.
OFF	The receiver is disabled, will not function.
AUTO	The receiver will switch on and off automatically, as operated by the thermostat.
MANUAL	Providing ON is selected, the receiver will switch on continuously, overriding the thermostat.



Setting Time and Date

1 Press the buttons together for 3 sec.

2 Press Up or Down to select the hour format.

3 Press Select to confirm your option.

4 Press Up/Down to set the hour.

5 Press Up or Down to set the hour.

6 Press Select and after that Up and Down to set the minutes.

7 Press Set to confirm the changes.

8 Continue with the same steps for setting the Day. Press Set to return to the Main Screen.

Programming the ALTHC027

You can create personalized programmes for your controller. You have the option to choose between a 5-2 days programme or a daily one by using the DIP Switches.

ALTHC027/ALTHC028 Thermostat	
5-2 Days Programme	24h Programme
Weekdays 6 sets of time/channel	24h 6 sets of time/channel
Weekends 6 sets of time/channel	
Total: 12 settings/week	Total: 42 settings/week

1 Press Set to change your programmes.

2 Press Up or Down to select Weekday/Weekend or the Day for which you want to create the program

1 Press Select to confirm your option.

2 Press Up/Down to set the hour.

3 Press Select to confirm your option.

4 Press Up/Down to set the minutes.

5 Press Select to confirm your option.

6 Press Up/Down to set the minutes.

After you have done all the changes, please press SET to confirm all your choices and to return to the Main Screen.

Note: Don't forget to move the DIP Switch to 24h in order to have the individual programme active. After that please follow the same instructions as for the 5-2 days programme.

Review the Setpoint (desired) temperature

1 Actual room temperature

2 Setpoint (desired) temperature

Temporary Override

1 Press Up/Down to review the setpoint temperature.

2 Press Up/Down to set the temperature.

1 Press Set to confirm the changes.

2 Press Up or Down to set the temperature.

Permanent Override

1 Press Override in order to activate the mode.

2 Press Up or Down to set the temperature.

3 Press Set to confirm the changes.

4 The Override sign will appear on the Main screen.

Boost function

1 Press +Hr to activate the Boost function.

2 Press Up or Down to set the Boost function.

Frost protection

1 Press the Frost button to activate the function.

2 Frost Mode ON.

1 Press the UP button once.

2 Frost Mode OFF.

The Frost protection temperature can be reviewed by pressing the UP button once, but can only be changed in Installer Mode.

Holiday Mode

1 Press the Holiday button for 3 sec.

2 Press the Up or Down button to set the Holiday period.

3 Press the Holiday button for 3 sec to exit Holiday Mode.

4 Press the Up or Down button to set the Holiday period.

Note: You can also exit Holiday Mode by setting the days to zero.

Reset function for ALTHC027

1 Press the Reset button once. You can use a paper clip.

2 Your device is now reset to factory settings.

Reset function for ALTHC028 Thermostat

1 Remove the batteries without pressing any button. Wait 2 minutes and insert the batteries again. Your device will be restarted.

When you want to change the batteries your device will use the internal memory to backup your settings. You have 30 seconds to change the batteries before losing your settings.